



A high quality imidacloprid sugar beet seed treatment



Focussed on quality, innovation and customers



A high quality imidacloprid sugar beet seed treatment

Tested extensively in trials against other imidacloprid seed treatments and newer seed treatments

Nuprid 600FS offers growers a cost effective choice whilst maintaining a high level of crop safety and efficacy

Introduction

Imidacloprid is a well-known sugar beet seed treatment used for many years and is now available again from Nufarm as Nuprid 600 FS. Nuprid will be available for all beet varieties, in 2009.

Nufarm have produced a quality cost-effective formulation of imidacloprid that has been thoroughly tested over the past three seasons. Trials have been conducted on behalf of Nufarm by some of the most respected names in the industry and found to be just as effective today, as in the early years of introduction.

Nuprid 600 FS protects against the important soil complex of insects and controls the virus transmitting aphids

The primary function of Nuprid 600 FS is to provide protection against the 'soil complex' of insects (pygmy beetles, symphalids, millipedes, springtails and flea beetles), leaf-mining insects such as mangold fly and beet leaf miners together with the all-important control of aphids and the viruses they transmit.

Nuprid treated beet



Symptoms of beet western yellows virus, transmitted by aphid.

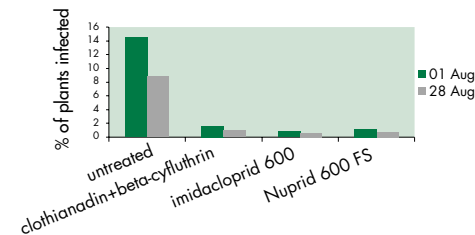


Nuprid 600 FS is tried and tested against the imidacloprid 600 seed treatment growers have used in the past and against newer products

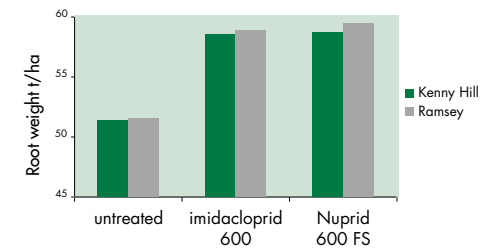
Some 22 trials have been conducted comparing Nuprid 600 FS with other imidacloprid products and newer market standards (clothianadin + beta-cyfluthrin).

Trials conducted in 2007 comparing Nuprid 600 FS with the imidacloprid 600 formulations used by growers in the past and showed both products were identical. Nuprid 600 FS did not differ from newer market standard in terms of virus yellows control.

Control of virus yellows with Nuprid 600 FS (2007)



Yield benefits of using Nuprid 600 FS (2006)



Nuprid 600 FS improves emergence and is safe to the crop

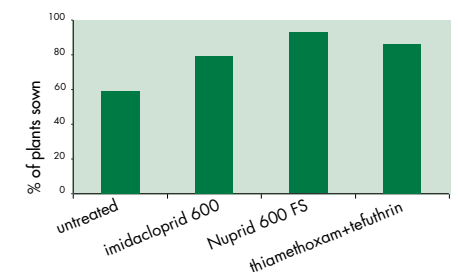
A field demonstration in spring 2008 where blocks of beet were drilled treated with different seed treatments illustrated that Nuprid 600 FS improved beet emergence.

Crop emergence is improved through controlling pests such as millipedes, which damage hypocotyls causing plant death. (*Untreated, Baston Fen, Lincs, 2008*).

Plant loss caused by millipede grazing on hypocotyls



Emergence of beet treated with Nuprid 600 FS (2008)



Nuprid 600 FS is compatible with nematicide granules for control of free-living nematodes

There were no adverse interactions documented in Broom's Barn trials between nematicide granules and imidacloprid. Granules should be used where the threat of nematodes prevail.

Interactions between imidacloprid and herbicides

Pre-emergence use of lenacil should be avoided when using imidacloprid based seed treatments.

Summary of Pests controlled by Nuprid 600 FS

Pest complex	
Springtails	●●●○
Millepedes	●●●
Symphylids	●●●○
Pygmy Beetle	●●●●
Wireworm	●●●
Aphid vectors	●●●○
Virus Yellows	●●●○
Capsids	●●●
Leaf Miners	●●●

The assessment of Nuprid 600 FS was made by Broom's Barn.

Key

Poor	●
moderate	●●
Good	●●●
Excellent	●●●●

For advice on Nuprid 600 FS please ring the Nufarm Technical Helpline or speak to your British Sugar Advisor.

Details of application timings and rates are detailed in Nufarm labels and product literature; both can be accessed from our web site at

www.nufarm.com/uk.

Alternatively ring the Nufarm helpline on **0208 3197232**, Monday-Friday 9 am – 5 pm.

Nufarm UK Ltd, Crabtree Manorway North,
Belvedere, Kent DA17 6BQ
Tel: 020 8319 7222 www.nufarm.com/uk

Always read the label: use pesticides safely

Nuprid 600 FS is a trademark of Nufarm

All other trademarks are acknowledged to be the property of the appropriate manufacturer