



HEALTH, SAFETY & ENVIRONMENT REPORT 2009

Croplands Australia

Croplands assembles and maintains spray rigs for use in Australian and New Zealand agriculture

The plant

is located to the north of Adelaide with good major arterial road connections to all points of the compass. In recent years the production area has doubled in size to cope with increased demand for our products. Extra space was also required to not only satisfy customer demand but to also cater for the overall need for spray units with ever increasing tank and boom sizes.

The site covers an area of approximately 20,000 m² and has two main structures, one housing administration and sales with the other housing production and warehousing.

Product from the Adelaide facility travels far and wide with recent deliveries going to Japan, USA and Europe.

Croplands also has office and warehouse facilities in Toowoomba (Qld), Midvale (WA) and Wellington (New Zealand).

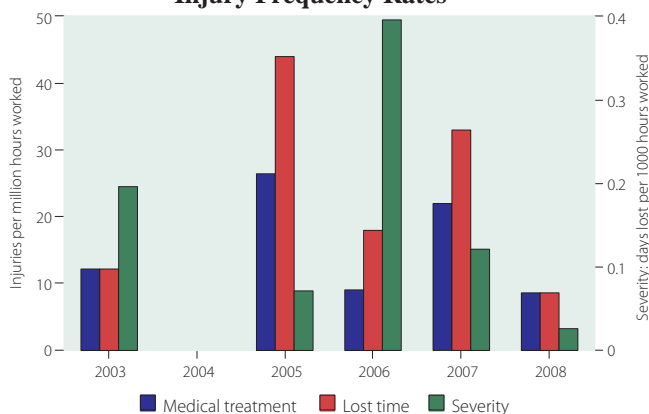
Health and safety performance

Our injury performance over the last few years has not been very good, but we are working on making improvements. With our mechanical processes, we suffer cuts, bruises and strains. Last year saw the addition of an overhead crane in the production department to increase efficiency and to also improve the safe handling of the ever growing components that are required for the spray units that we build. Total staff numbers for all Croplands sites, including territory managers is 76.

In recent times the entire staff base in Adelaide has had refresher training in the safe and effective use of hand held fire extinguishers. Two staff have also been trained to enable us to carry out our own electrical testing and tagging, we have also invested in the appropriate test equipment for this process.

We have an OH&S committee of seven people from all facets of the business who meet regularly to cover a myriad of subjects ranging from training to housekeeping issues and to also deal with any matters raised by the UIR system that may require attention.

Injury Frequency Rates



Note: All lost time injuries are also counted as medical treatment injuries

New cranes to boost productivity and increase safety

In an effort to increase workshop efficiency, Croplands' production department in Adelaide recently installed two new bridge style cranes. Productivity downtime will now be greatly reduced and more importantly, this is safer than using forklifts to move large parts and assemblies.

The cranes share a combined load capacity of five tonnes. With the larger crane at the pre-assembly end of the factory capable of lifting up to 3.2 tonnes and the smaller located at the booming end lifting up to two tonnes.

Production team members have undergone training to understand the operation of the cranes as well as performing safety inspections and basic load slinging techniques.

Our long term goal is to cease the use of forklifts in the workshop altogether.



Croplands head office and plant

Working together

Closer working relations between Croplands and Nufarm are being forged on a regular basis with the Spraywise programme being a recent example.

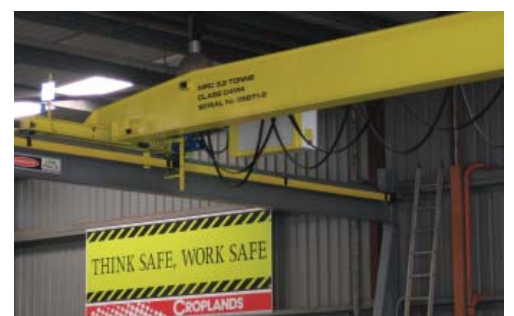
The Spraywise programme provides the farmer/spray contractor with all the relevant spray nozzle performance figures so that he can then match perfectly to the application rate required for his chosen Nufarm chemical, thus ensuring safe operating and maximum chemical efficacy.

To go hand in hand with the Spraywise programme there is now also the Spraywise Decisions website, which provides the farmer/spray contractor with all current local climatic information that will help with the decision making process on when conditions will be ideal to carry out their spray operation.

Both of these industry initiatives are aimed at making the task of crop spraying a safer process for both the spray operator and ultimately the consumer, as product quality improves. Both also have a strong focus on delivering the spray to the target weeds (or crop) to prevent it from moving off the target area.



A Croplands built sprayer keeping the lawns of Parliament House in Canberra weed free



Pre Delivery Inspection and Checklist of Machinery

Each delivery of a Croplands broadacre, horticulture or self propelled machine requires that the dealer and/or service agent perform a pre-delivery Inspection on the machine and complete a checklist and warranty registration form. The checklist covers all aspects of the unit including the chassis, booms, tanks, nozzles and electrical components fitted such as GPS systems. This thorough process not only ensures that the machine is in good working order but also provides an introduction on the safe and correct use of the machine to the farmer.



Croplands Pegasus spray units in transit to a customer

Spraywise Education Program

In conjunction with Nufarm, Croplands have been undertaking a workshop program throughout Australia and New Zealand to educate dealers and farmers of the importance of correct nozzle selection according to application and machinery used. Choosing the correct nozzle is imperative to significantly reduce the incidence and risk of spray drift damage to a diversity of crops without compromising spraying efficacy. The workshops cover the importance of nozzle choice and set-up of machinery, impact of weather and governing legislation. By working together on this project Croplands and Nufarm are able to offer information and tools not only to stockists of the Croplands Optima range but also to the farmer themselves so that they can spray more effectively and safely in their area.



New Premises for Croplands WA

Recently, Croplands Equipment WA saw a need for more space and increased staff numbers to accommodate the increased business and work load. During the last four years Croplands has progressed from sharing space with Sprayline Equipment, to their own facility next door and now to our new location at 67 Farrall Road. The new office and warehouse structure remains much the same as before, but with the added advantage of large workshops at the rear creating a better work area for our contracted work force.



Machinery Training

With the large range of Broadacre, Self Propelled and Horticulture sprayers that Croplands sell, it is important that not only Croplands Service Staff but machinery dealers are properly aware of how to service and repair these units. Various service schools are held throughout the year in Australia and New Zealand to educate staff and dealers on the safest and most effective way of servicing these machines. Frequently representatives from international suppliers are involved in these programs too, so that all aspects of the machines are covered adequately.



Croplands sales & technical service staff and end users during safety training day for Rogator spray unit

Community

In the community Croplands are involved in supporting junior rugby in South Australia, we are told that there are many future test players currently being groomed for stardom by the general manager. Croplands are proud sponsors of the Southern Suburbs Rugby Union club with some of the staff in the factory playing for the seniors side. This encourages some healthy competition in the factory with other staff members playing for Port Adelaide Rugby Club.



Future stars

Address: 50 Cavan Rd, Dry Creek, South Australia, 5094

Telephone: 08 8359 9374

Facsimile: 08 8359 9376

Website: www.nufarm.com