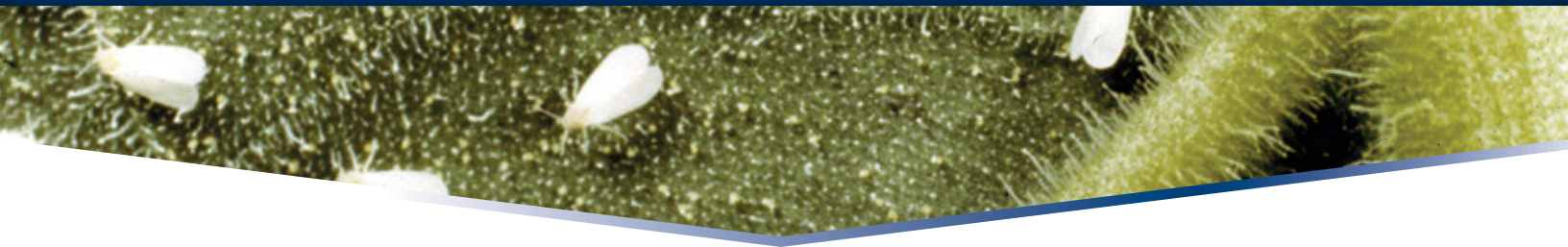


Safari® INSECTICIDE

FICUS (FIG) WHITEFLY CONTROL ON FICUS HEDGES



Safari® Insecticide is a super-systemic neonicotinoid insecticide with quick uptake and knockdown of many invasive pests - including the ficus (fig) whitefly. Available in two formulations - Safari 20 SG and Safari 2 G.

SAFARI 20 SG - SOIL DRENCH APPLICATION

HEIGHT (IN FEET) OF FICUS HEDGE	AMOUNT OF SAFARI 20 SG PER 100 LINEAR FEET OF FICUS HEDGE ROW
5 ft	5 oz
10 ft	10 oz
15 ft	15 oz
20 ft	20 oz
25 ft	25 oz
30 ft	30 oz

SAFARI 20 SG SOIL DRENCH APPLICATION BEST PRACTICES

- Rake back mulch before applying drench - especially at lower volumes or when soil is dry.
- Spray or pour Safari 20 SG drench solution on lower trunk and soil surrounding each ficus plant in hedge. Apply solution within 12" of edge of trunk.
- If soil is dry, irrigate before application if possible.
- Before mixing Safari 20 SG drench solution, determine volume (gallons) of drench solution that will be applied per 100 linear feet of ficus hedge row. Drench volume will determine how much Safari 20 SG should be mixed per gallon of water.
- Suggested volume of dilute Safari 20 SG drench solution to apply to ficus hedge row = 1-25 gallons per 100 linear feet of hedge row, depending on height of hedge, soil moisture and application equipment.

Example: Ficus hedge is 10 feet tall and applicator wants to apply 25 gallons of Safari 20 SG drench solution per 100 linear feet of hedge row. Therefore, applicator should mix 10 oz of Safari 20 SG (by weight) in 25 gallons of water and apply 25 gallons of the resulting solution per 100 linear feet of hedge row.



Grow a better tomorrow.

Image Credit: Clemson University - USDA Cooperative
Extension Slide Series, Bugwood.org

Safari®

INSECTICIDE

SAFARI® 2 G - DRY GRANULE APPLICATION

HEIGHT (IN FEET) OF FICUS HEDGE	AMOUNT OF SAFARI 2 G PER 100 LINEAR FEET OF FICUS HEDGE ROW
5 ft	3.1 lbs
10 ft	6.2 lbs
15 ft	9.3 lbs
20 ft	12.5 lbs
25 ft	15.6 lbs
30 ft	18.8 lbs

SAFARI 2 G DRY GRANULE APPLICATION BEST PRACTICES

- Rake back mulch before applying Safari 2 G, especially if soil is dry.
- Apply Safari 2 G granules to soil at base of ficus plants in a 12" wide band along hedge row.
- Rainfall or irrigation is needed to dissolve granules and move Safari into root zone, especially if soil is dry at time of application.



www.nufarm.com/us

For specific application rates, directions, mixing instructions and precautions, read the product label. Please visit www.nufarm.com/us to download a full label.
©2015 Nufarm. Important: Always read and follow label instructions. Safari® is a trademark of Valent U.S.A. Corporation. 15-TO-0068