

Tuscany[®] SC

Herbicide



**PATENT
PENDING**

**LIQUID
FORMULATION**

Stay Weed-free with Liquid Tuscany[®] SC.

Now in a convenient liquid formula, the tree, nut and vine specialist, Tuscany[®] SC Herbicide blocks tough weeds with long-lasting residual control of more than 60 weeds. Liquid Tuscany SC stays where you put it, with low leaching or volatilization potential. Plus, it offers excellent rotational flexibility. For proven crop safety and dependable control in various weather conditions, count on Tuscany SC.

BROAD SPECTRUM

- Controls a broad spectrum of annual broadleaf and grass weeds, including most broadleaf weeds resistant to glyphosate
- Convenient new liquid formulation makes mixing and loading faster and easier
- Enhances burndown of existing weeds when tankmixed with Leopard[™] (glufosinate) or Credit[®] Xtreme (glyphosate)

LONG LASTING

- Offers residual control in tree fruit, nut and grapes to keep vineyards and orchard floors clear for months
- Flexible rotation options allow you to pick the crop that maximizes your profits

LOW LEACHING OR VOLATILIZATION POTENTIAL

- At least ¼ inch rainfall or irrigation required to release activity

EPA REG. NO. 71368-113

ACTIVE INGR. flumioxazin (44.0%)
(4 lb per gallon)

FORMULATION liquid

CHEM. FAMILY N-phenylphthalimide

GROUP NO. 14

MODE OF ACT. PPO inhibitor

REI 12 hours

SIGNAL WORD none

RES. USE no

PACKAGE SIZE 4 x 64 oz,
2 x 2.5 gal in 25 cases/pallet

SAME RATE, SAME POWER

RATES ARE EQUIVALENT TO WDG FORMULATION:
1 oz Tuscany WDG = 1 fl oz Tuscany SC



Nufarm

Grow a better tomorrow.

Tuscany® SC

Herbicide

KEY USES

Many crops including; almond, grape, mint, pistachio, potato, non-bearing fruit and nut trees, fallow land and to maintain bare ground on non-crop areas of farms, orchards and vineyards

KEY WEEDS CONTROLLED

(See product label for complete list)

Chickweeds (*common*)
 Dandelion
 Filaree
 Groundsel (*common*)
 Henbit
 Johnsongrass (*seedling*)
 Lambsquarters (*common*)
 Little mallow
 London rocket
 Maretail/horseweed
 Mustard (*wild*)
 Nightshades (*black*)
 Pigweeds (*redroot*)
 Prickly lettuce
 Puncturevine
 Purslane (*common*)
 Radish (*wild*)
 Redmaids
 Shepherd's-purse
 Sowthistle (*annual**, *prickly*)
 Waterhemp (*common*, *tall*)

PROVIDES ACTIVITY ON:

Barnyardgrass
 Bluegrass (*annual*)
 Crabgrass (*large*)
 Lovegrass (*California*)
 Panicums (*fall*)
 Ryegrass (*Italian*)
 Russian thistle
 Smartweeds

* Not for use in California

USE SUMMARY - ROTATION OPTIONS

VINEYARDS AND ORCHARDS

RATE	CROP	ROTATIONAL INTERVAL
6 to 12 fl oz/A	Trees can be transplanted 2 months after an application of this product ¹	18 mths (no tillage)

¹ Transplanted apple, apricot, avocado, bushberries (including blueberry), cherry, fig, grape, grapefruit, lemon, nectarine, nut trees (including pistachio), olive, orange, peach, pear, plum (including dried plum), and tangerine can be planted 2 months after application of 2 to 12 oz/A of this product.

Pre-emergence: Pre-emergence applications should be made to a weed-free soil surface.

Burn down: For best results, tank mix Tuscany® SC with a burn down herbicide.

Timing: For best results, apply twice per year. Apply after harvest and before bud break.

Spray volume: Minimum of 15 gallons of spray solution per acre.

Adjuvant: Per recommendation of tank mix partner.

RATE	CROP	ROTATIONAL INTERVAL
1.5 fl oz/A	Potatoes	Consult Product Label

DO NOT apply more than 1.5 fl oz of Tuscany SC per acre during a single application.

DO NOT apply more than 1.5 fl oz of Tuscany SC per acre during a single growing season.

DO NOT apply to hill (furrow) irrigated potatoes.

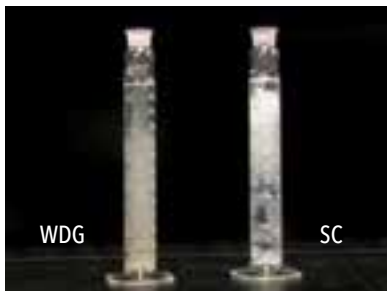
Many weather related factors, including high wind, splashing or heavy rains or cool conditions at or near potato emergence may result in potato injury in fields treated with Tuscany SC.

Pre-emergence: Apply to soil covered potatoes for pre-emergence suppression.

Timing: Apply to potatoes after hilling. Tank mix with other labeled herbicides for broad spectrum weed control. A minimum of 2 inches of soil must cover the vegetative portion of the potato plant at the time of application. Application to potatoes with less than 2 inches of soil covering the vegetative portion of the potato may result in crop injury.

TUSCANY® SC BLOOMS AND MIXES EASILY AND STAYS IN SUSPENSION

Unlike WDG formulations, liquid Tuscany SC blooms quickly and mixes easily. With only slight agitation, Tuscany SC mixes evenly and completely. Plus, it stays in suspension longer – even after two hours without agitation, Tuscany SC shows no signs of settling.



Liquid Tuscany SC (right) goes into suspension quickly – allowing for easier mixing and less settling than WDG formulation (left)



Even after two hours, Tuscany SC stays in suspension

See label for complete directions for use, including chemigation application rates and directions for use on potatoes.



www.nufarm.com/us

For specific application rates, directions, mixing instructions and precautions, read the product label. Please visit www.nufarm.com/us to download a full label.
 ©2016 Nufarm. Important: Always read and follow label instructions. Credit® Xtreme, Leopard®, and Tuscany® is a trademark of Nufarm. 16-AG-0016