

# Pinpoint™

## FUNGICIDE

### Conquer Dollar Spot with Pinpoint™ Selectivity.

Pinpoint™ Fungicide is formulated with a new fungicide active ingredient designed for outstanding dollar spot control. *Pinpoint* provides superintendents and other turf management professionals with an excellent fungicide program rotation partner to help manage and mitigate dollar spot resistance from SDHI, DMI, benzimidazole and dicarboximide fungicides. *Pinpoint* is labeled for use on golf courses and sod farms, as well as residential and commercial lawns.

#### KEY PERFORMANCE BENEFITS

- New fungicide active ingredient available exclusively from Nufarm
- Unique and selective activity against dollar spot
- Excellent rotation partner for managing resistance to SDHI, DMI, benzimidazole and dicarboximide fungicides
- Excellent turf tolerance
- Preventive and early curative activity
- Optimized for early- through late-season dollar spot control

EPA REG. NO.	59639-199
ACTIVE INGR.	mandestrobin (43.4%)
FORMULATION	liquid (4SC)
CHEM. FAMILY	strobilurin
FRAC NO.	11
SIGNAL WORD	caution
RESTRICTED	no
PACKAGE SIZE	4 x 60 fl oz bottle

-  GOLF TURF
-  SOD FARMS
-  RESIDENTIAL
-  COMMERCIAL
-  TURF



Grow a better tomorrow.

# Pinpoint™

## FUNGICIDE

### KEY USES

Athletic fields  
 Golf courses  
 Lawns (*residential, institutional, public, commercial and industrial*)  
 Parks and recreational areas  
 Sod farms

### KEY DISEASES CONTROLLED

Dollar spot  
 Brown patch (*suppression only*)  
 Fairy ring  
 Rust  
 Take-all patch

### USE SUMMARY

*Pinpoint* can be applied pre- or post-infection, but is most effective when applied prior to infection. Optimal disease control is achieved when *Pinpoint* is applied in a regularly scheduled spray program, used in combination and/or rotation with other effective fungicides that have different modes of action and are effective against dollar spot.

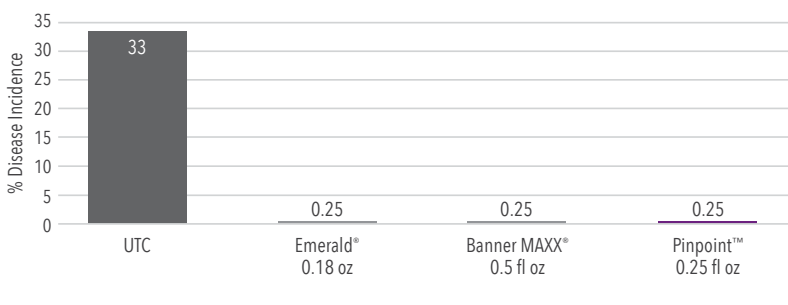
DISEASES	RATE	APP. INTERVAL
Dollar spot	0.17-0.31 fl oz/1,000 sq ft 7.4-13.5 fl oz/A	14-21 days
Brown patch, fairy ring, rust, take-all patch	0.31 fl oz/1,000 sq ft 13.5 fl oz/A	14 days

For dollar spot, use preventively and begin applications when conditions favor disease development. For all other diseases, begin applications when conditions favor disease development or when the disease first appears.

*See label for complete directions for use.*

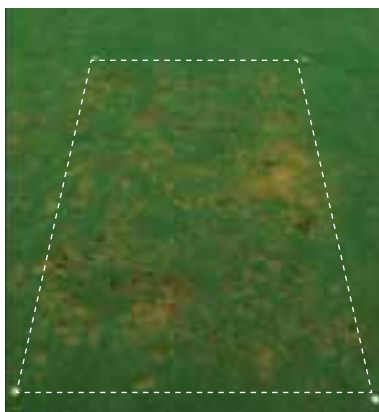
### DOLLAR SPOT CONTROL ON CREEPING BENTGRASS

8 DA 4th application - August 15, 2013 (Columbus, OH); 14-day spray interval  
 2013JFAUS051, Joe Rimelspach, The Ohio State University

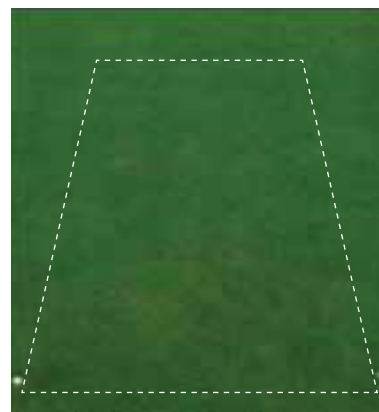


### PINPOINT TRIAL ON CREEPING BENTGRASS

Creeping Bentgrass Green 'Crenshaw'  
 Dr. Bruce Martin, Clemson University (2012)



UNTREATED



PINPOINT 0.25 FL OZ/ACRE  
 28 DA 4th application - August 22, 2012



[www.nufarm.com/us](http://www.nufarm.com/us)

For specific application rates, directions, mixing instructions and precautions, read the product label. Please visit [www.nufarm.com/us](http://www.nufarm.com/us) to download a full label.  
 ©2016 Nufarm. Important: Always read and follow label instructions. Pinpoint™ is a trademark of Valent U.S.A. Corporation. Emerald® is a trademark of BASF.  
 Banner MAXX® is a trademark of a Syngenta Group Company. 16-TO-0005