

Clipper® SC



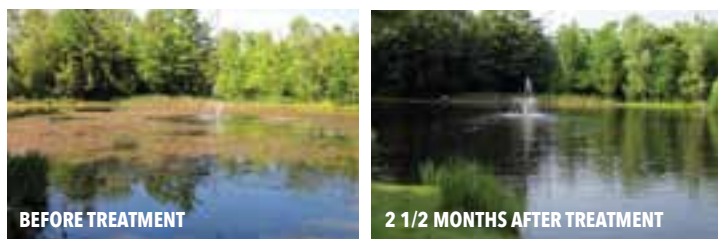
Tough. Fast. Gone.

Clipper® SC delivers fast and selective control of tough invasive and nuisance plants such as cabomba, watermeal, Eurasian watermilfoil, water lettuce, duckweed, giant salvinia and more. Plus, Clipper SC dissipates quickly from the water column and does not accumulate in sediment. With 4 lb of flumioxazin per gallon, Clipper SC offers easier handling and mixing.

CLIPPER SC DELIVERS UNBEATABLE AQUATIC WEED CONTROL

- Convenient liquid formulation improving ease of application, transport, and handling
1 liquid fl oz Clipper SC = 1 dry oz Clipper WDG
- Fast and selective control of tough invasive and nuisance plants
- Dissipates quickly from the water column and does not accumulate in sediment, giving it a favorable environmental profile
- Easy mixing, handling, and measuring
- Less packaging
- Improved efficacy with less pH sensitivity

FAST AND SELECTIVE CONTROL OF TOUGH INVASIVE AND NUISANCE PLANTS



Trial Work, M. Belland, Aquatic Control Technology, 2012 Application Date: May 17, 2012
Pond Location: Northwest Connecticut Target Plants: Curlyleaf pondweed (submersed) and filamentous, green algae (floating)

EPA REG. NO.	71368-114
ACTIVE INGR.	flumioxazin (44%)
FORMULATION	liquid
CHEM. FAMILY	N-phenylphthalimide
HRAC NO.	14
SIGNAL WORD	no signal word required
RESTRICTED	no
PACKAGE SIZE	4 x 64 oz, 2 x 2.5 gal



TREAT MORE PER CASE

Our new liquid Clipper SC formula treats twice as many Acre feet when compared to Clipper 51 WDG.



Nufarm

Grow a better tomorrow.

Clipper® SC

KEY USES

For the management of undesirable aquatic vegetation in slow moving or quiescent waters

KEY WEEDS CONTROLLED

(See product label for complete list)

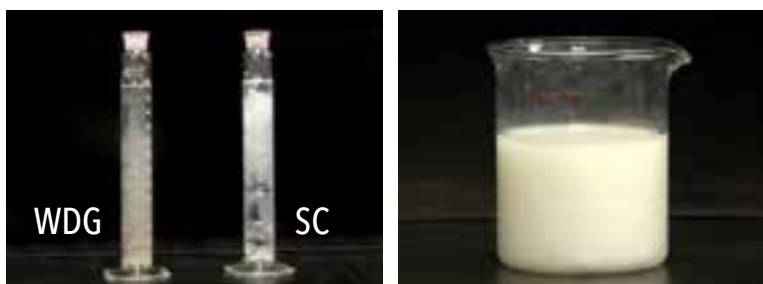
Alligator weed
Cabomba
Coontail
Curlyleaf pondweed
Duckweed
Eurasian watermilfoil
Fanwort
Filamentous algae
Frogs-bit
Green algae
Hydrilla
Pondweed
Sago pondweed
Variable-leaf watermilfoil
Water fern
Water lettuce
Water pennywort
Watermeal

USE SUMMARY

Clipper® SC is a contact herbicide that quickly degrades in water. Good coverage and contact time is essential. Make applications with sufficient volume of water according to the label. When making applications to floating or emergent weeds, apply at 6 to 12 fl oz per acre and mix with an adjuvant approved for aquatic sites. For subsurface applications, apply Clipper SC at 200 to 400 ppb in the water column. Please see label for information on the effects of high pH on plant response and efficacy.

CLIPPER® SC BLOOMS AND MIXES EASILY AND STAYS IN SUSPENSION

Unlike WDG formulations, liquid Clipper SC blooms quickly and mixes easily. With only slight agitation, Clipper SC mixes evenly and completely. Plus, it stays in suspension longer – even after two hours without agitation Clipper SC shows no signs of settling.



Liquid Clipper SC goes into suspension quickly – allowing for easier mixing and less settling than WDG formulation

Even after two hours, Clipper SC stays in suspension

PRECAUTIONS AND RESTRICTIONS

No restrictions for swimming, drinking, or fishing.

DO NOT apply to intertidal or estuarine areas.

In areas with dense weed vegetation only treat 1/2 the water body at one time and wait 10-14 days before treating the remaining area. DO NOT re-treat the same section of water within 28 days of application.

Treated water may not be used for irrigation purposes on food crops until at least five days after application.

Treated water may be used for irrigation purposes on turf and landscape ornamentals as outlined in the *Irrigation Restrictions Following Application* table below.

DO NOT use in water utilized for crawfish farming.

DO NOT re-treat the same section of water with Clipper SC more than 6 times per year.

DO NOT exceed 400 ppb of Clipper SC during any one application.

IRRIGATION RESTRICTIONS FOLLOWING APPLICATION

APPLICATION METHOD	RATE	WATER DEPTH	TURF & LANDSCAPE ORNAMENTALS	GREENHOUSE & NURSERY ORNAMENTALS
Surface Spray	6-12 oz per surface acre	Greater than 3 feet	None	5 Days
		Less than 3 feet	12 Hours	5 Days
Subsurface	Less than 200 ppb	N/A	1 Day	5 Days
	200-300 ppb	N/A	2 Days	5 Days
	300-400 ppb	N/A	3 Days	5 Days

See label for complete directions for use.



www.nufarm.com/us

For specific application rates, directions, mixing instructions and precautions, read the product label. Please visit www.nufarm.com/us to download a full label.
©2016 Nufarm. Important: Always read and follow label instructions. Clipper® is a trademark of Valent U.S.A. Corporation. 16-TO-0004-F / 16-VM-0004-C